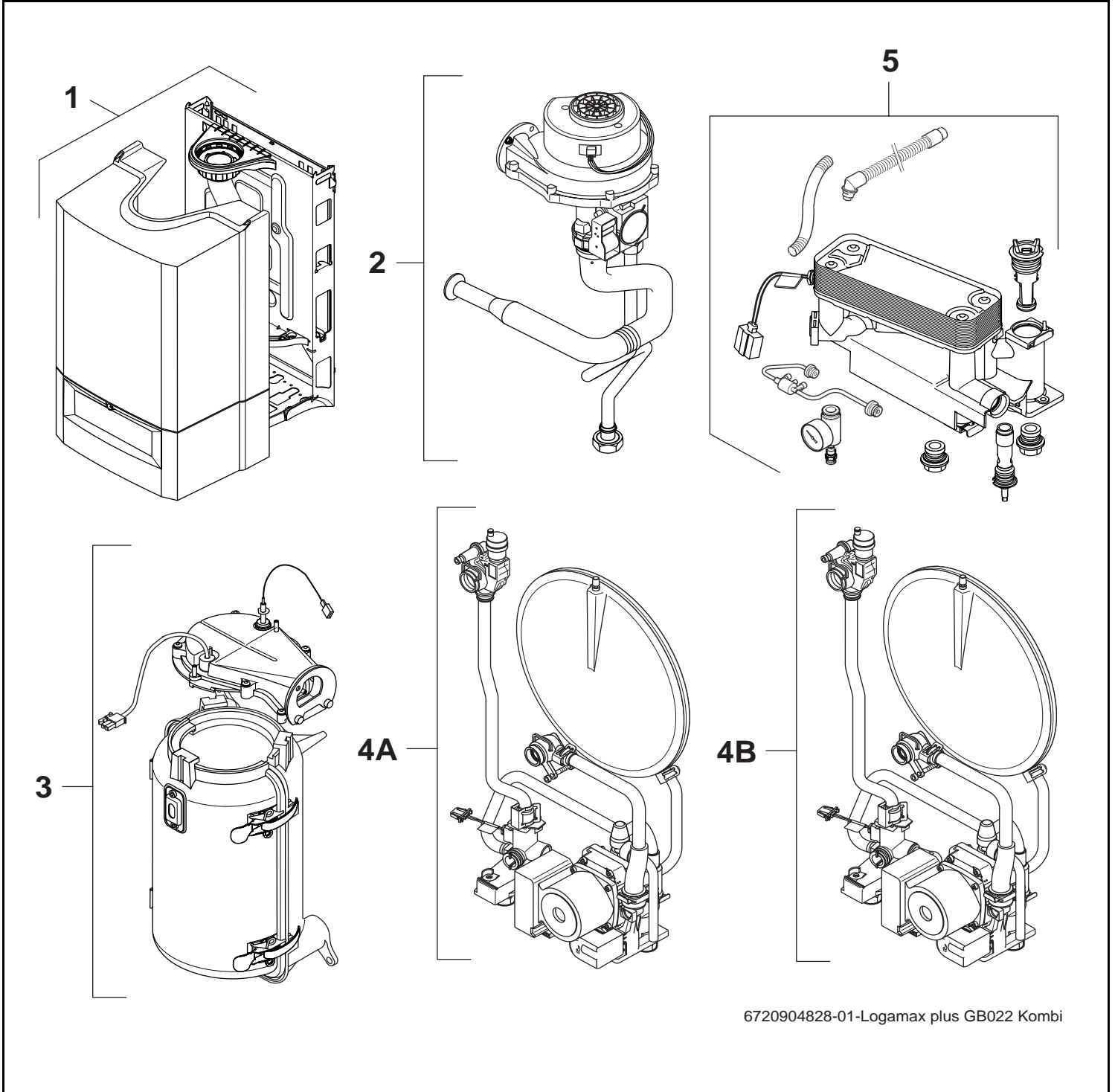


GB022



6720904828-01-Logamax plus GB022 Kombi

Buderus

Wichtige Hinweise

- Ersatzteile dürfen nur von einem zugelassenen Installateur eingebaut werden!
- Im Anhang finden Sie:
 - die Übersetzungen aller verwendeten Teilebezeichnungen
 - eine Übersicht der Gerätetypen und Länder, für die diese Ersatzteilliste gilt.

Important notes

- The spare parts may only be installed by an approved installer!
- In the appendix you will find:
 - a list of translations of the names of all parts used
 - a list of the models and countries to which this spare parts list applies.

Indications importantes

- L'installation des pièces de rechange doit être effectuée par un professionnel qualifié!
- Veuillez trouver en annexe:
 - les traductions de toutes les désignations des pièces utilisées
 - une vue globale des types de chaudières et des pays pour lesquels la présente liste des pièces de rechange est valable.

Informações importantes

- Peças de substituição só podem ser montadas por um técnico credenciado!
- Em anexo encontra:
 - as traduções das designações de todas as peças utilizadas.
 - lista dos aparelhos e países para os quais esta lista de peças de substituição é válida.

Avvertenze importanti

- Le parti di ricambio possono essere montate esclusivamente da personale qualificato ed in possesso dei requisiti tecnico-professionali!
- In appendice sono reperibili:
 - traduzione di ogni descrizione relativa alle varie parti di ricambio
 - elenco di sigle e codici, corrispondente ai vari paesi di destinazione.

Indicaciones importantes

- Los repuestos solamente deben ser montados por los servicios técnicos oficiales de la marca!
- En el anexo podrá encontrar:
 - la traducción de todas las denominaciones de piezas empleadas
 - una relación de los tipos de aparato y países en los que se aplica esta lista de repuestos.

Belangrijke aanwijzing

- Onderdelen mogen alleen door een erkend installateur worden vervangen!
- In de bijlage vindt u:
 - de vertalingen van de gebruikte onderdelentekeningen
 - een overzicht van toesteltypen en de landen waarvoor deze onderdelenlijst bedoeld is.

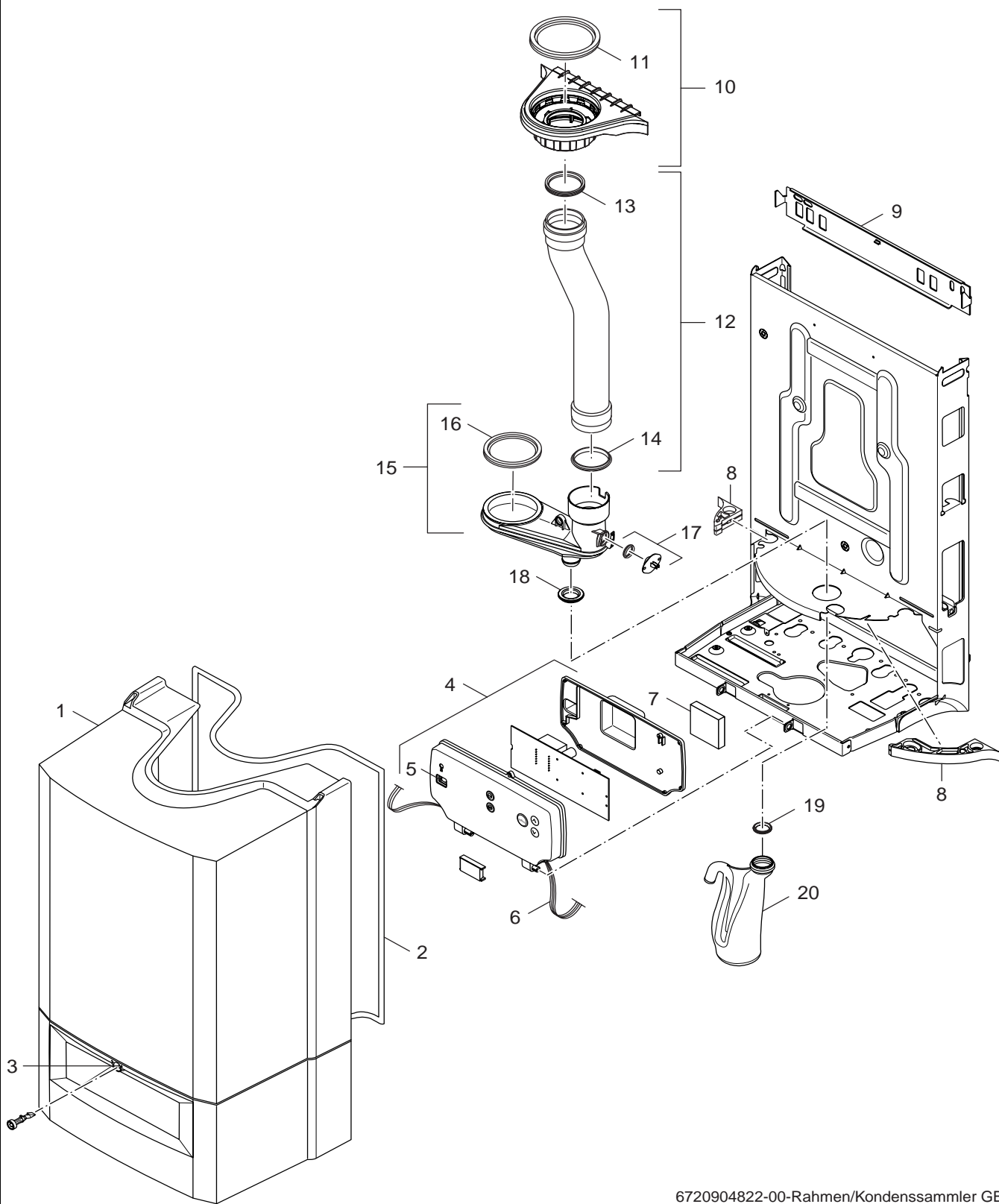
Önemli Bilgiler

- Yedek parçalar sadece yetkili tesisatçılar tarafından monte edilebilir!
- Aşağıdaki bilgileri ekli olarak bulabilirsiniz:
 - Tüm kullanılan parça tanımlarının tercümelere
 - Bu yedek parça listesinin geçerli olduğu tüm cihaz çeşitleri ve ülkelerin özeti.

Ersatzteilliste
Spare parts list

Liste des pièces de rechange
Lista parti di ricambio

Yedek Parça Listesi
Catálogo de peças de substituição



6720904822-00-Rahmen/Kondenssammler GB022

Rahmen/Kondenssammler GB022
Frame GB022
Cadre-support GB022

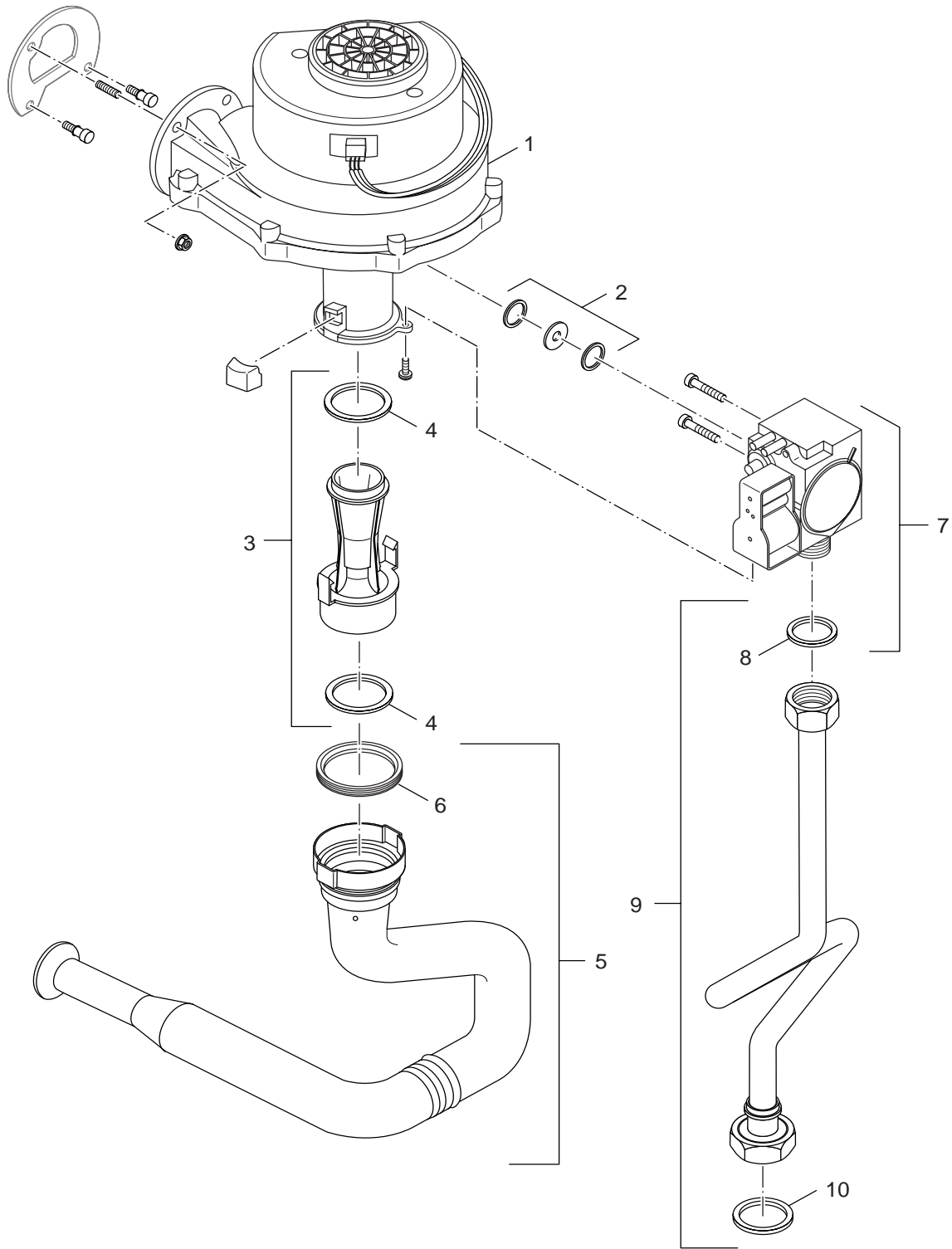
GB022

1

Ersatzteilliste
Spare parts list

Liste des pièces de rechange
Lista parti di ricambio

Yedek Parça Listesi
Catálogo de peças de substituição



6720904823-00-Gebälse GB022

Gebälse GB022
Centrifugal blower GB022
Ventilateur GB022

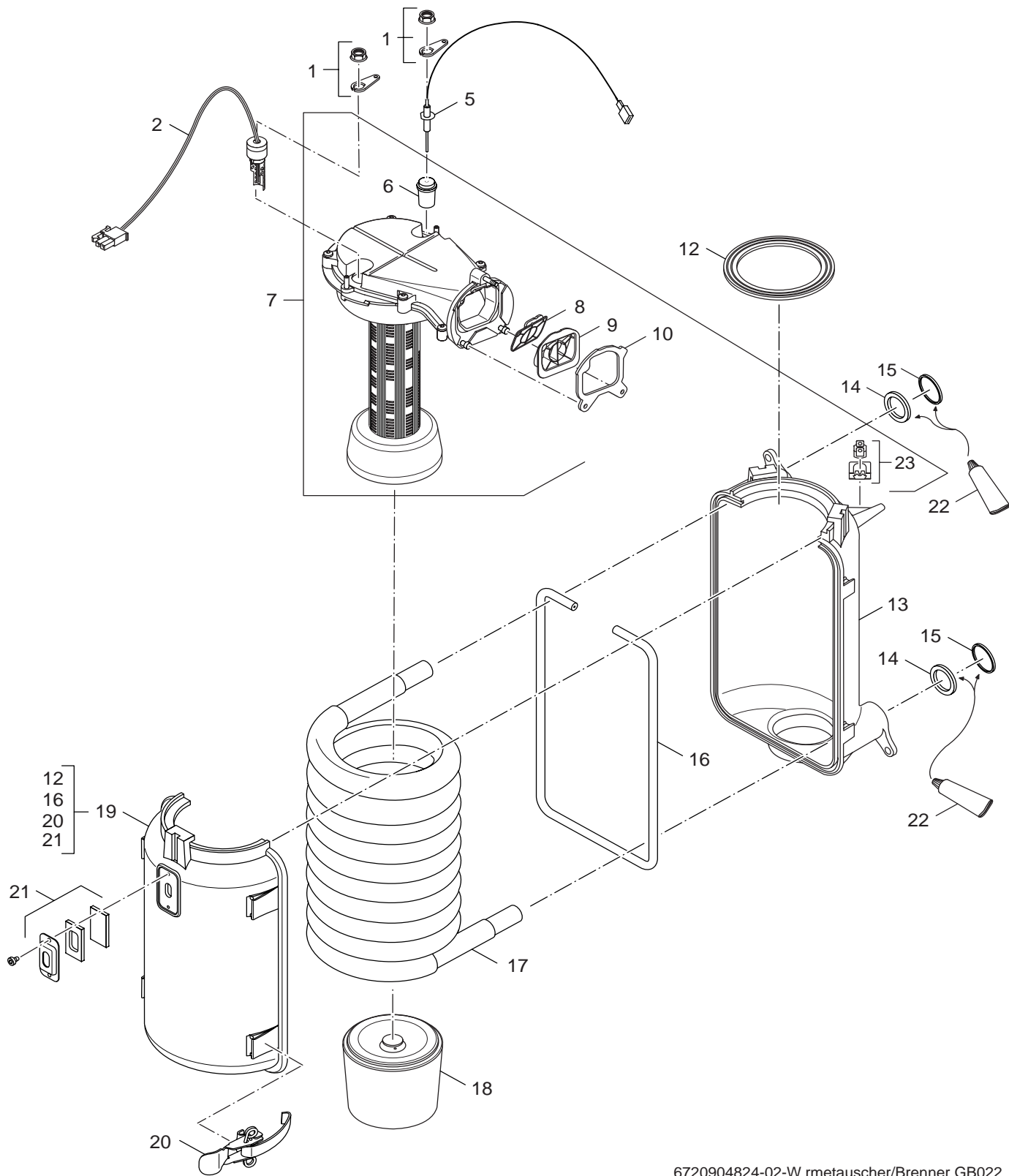
GB022

2

Ersatzteilliste
Spare parts list

Liste des pièces de rechange
Lista parti di ricambio

Yedek Parça Listesi
Catálogo de peças de substituição



6720904824-02-W rmetauscher/Brenner GB022

Wärmetauscher/Brenner GB022
Heat exchanger/Burner GB022
Echangeur de chaleur/Brûleur GB022

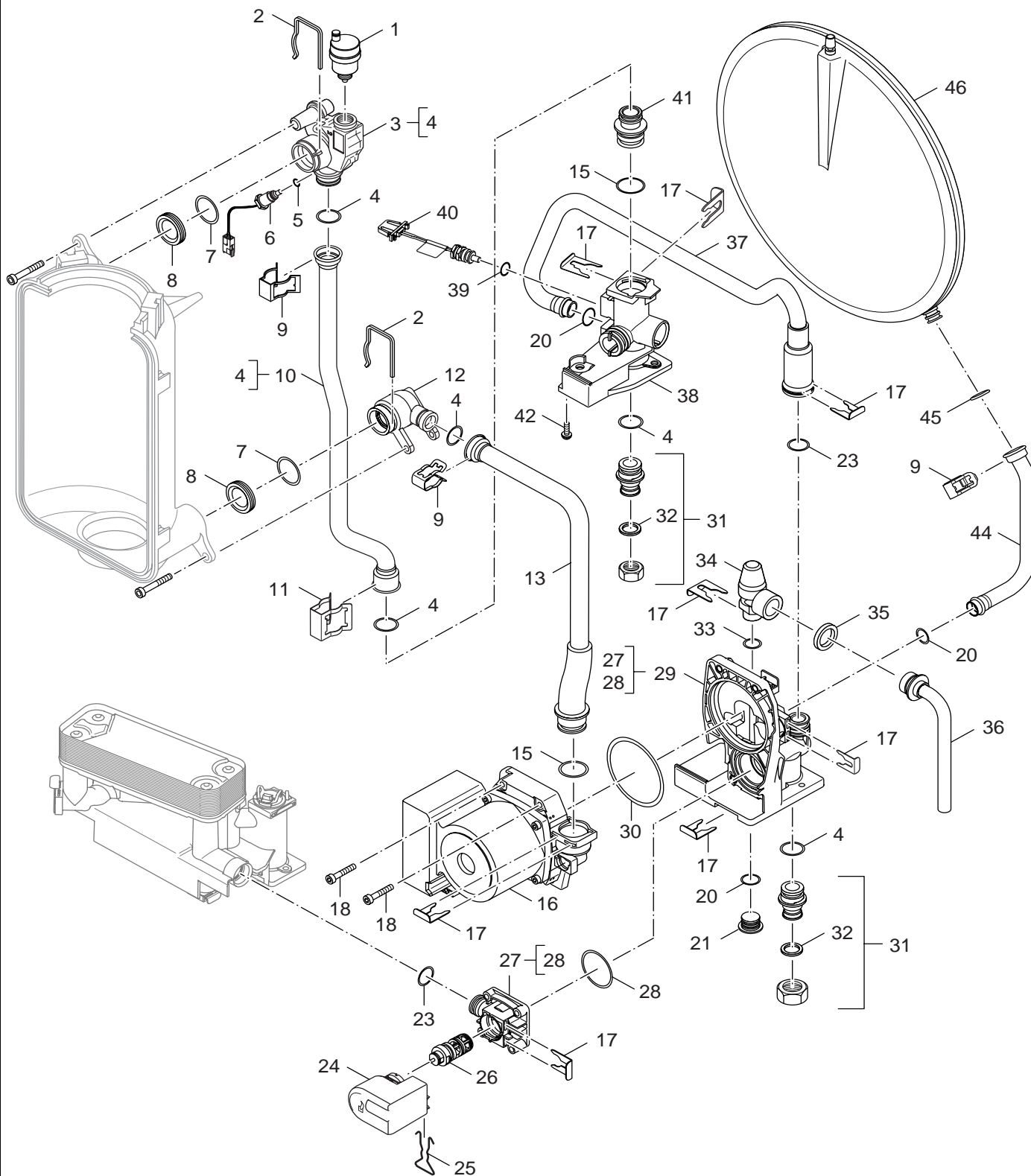
GB022

3

Ersatzteilliste
Spare parts list

Liste des pièces de rechange
Lista parti di ricambio

Yedek Parça Listesi
Catálogo de peças de substituição



6720904826-01-Vorlauf/Rücklauf Pumpe Kombi GB022

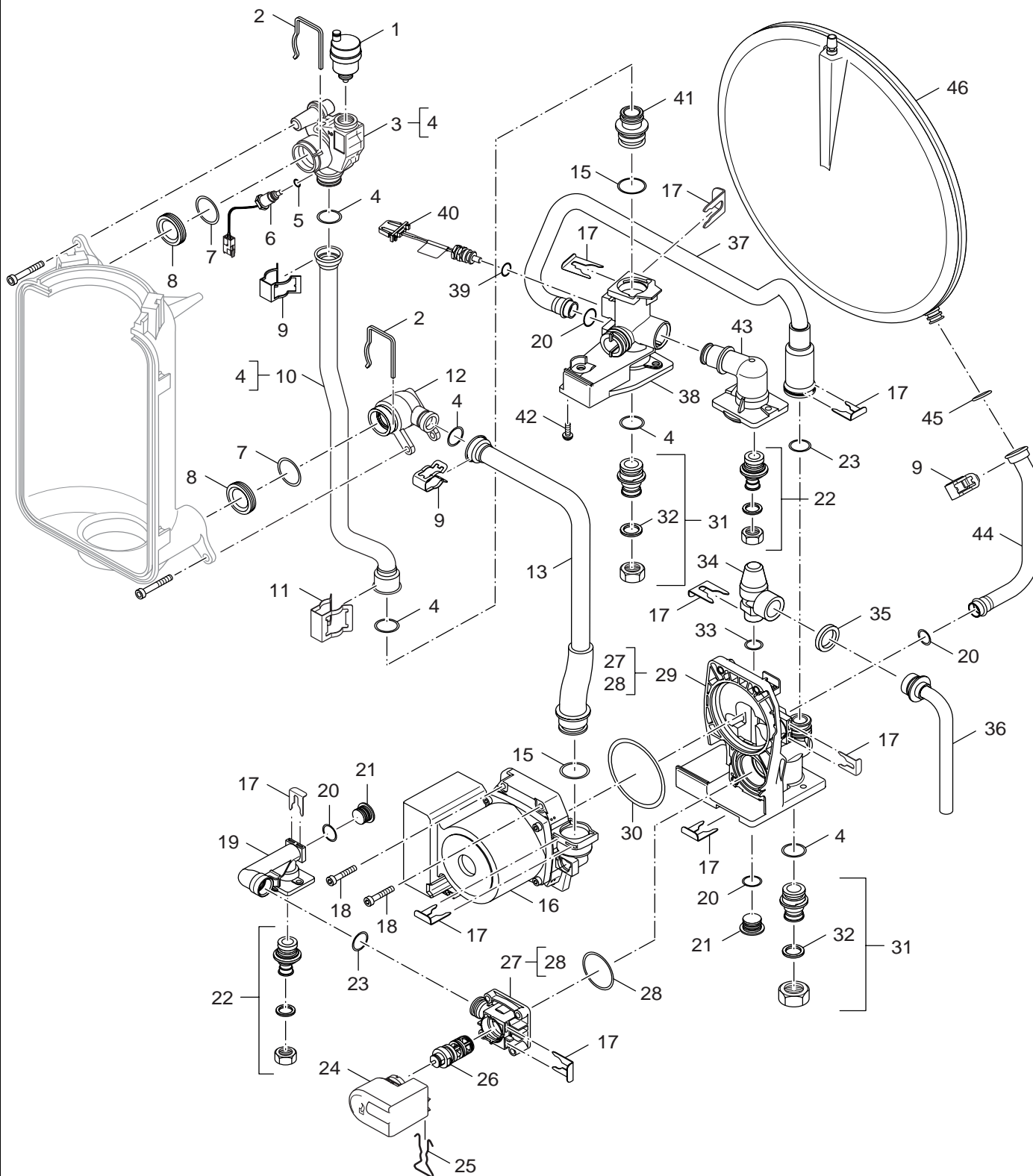
4
A
Vorlauf/Rücklauf Pumpe Kombi GB022
Pump Kombi GB022
Circulateur Kombi GB022

GB022

Ersatzteilliste
Spare parts list

Liste des pièces de rechange
Lista parti di ricambio

Yedek Parça Listesi
Catálogo de peças de substituição

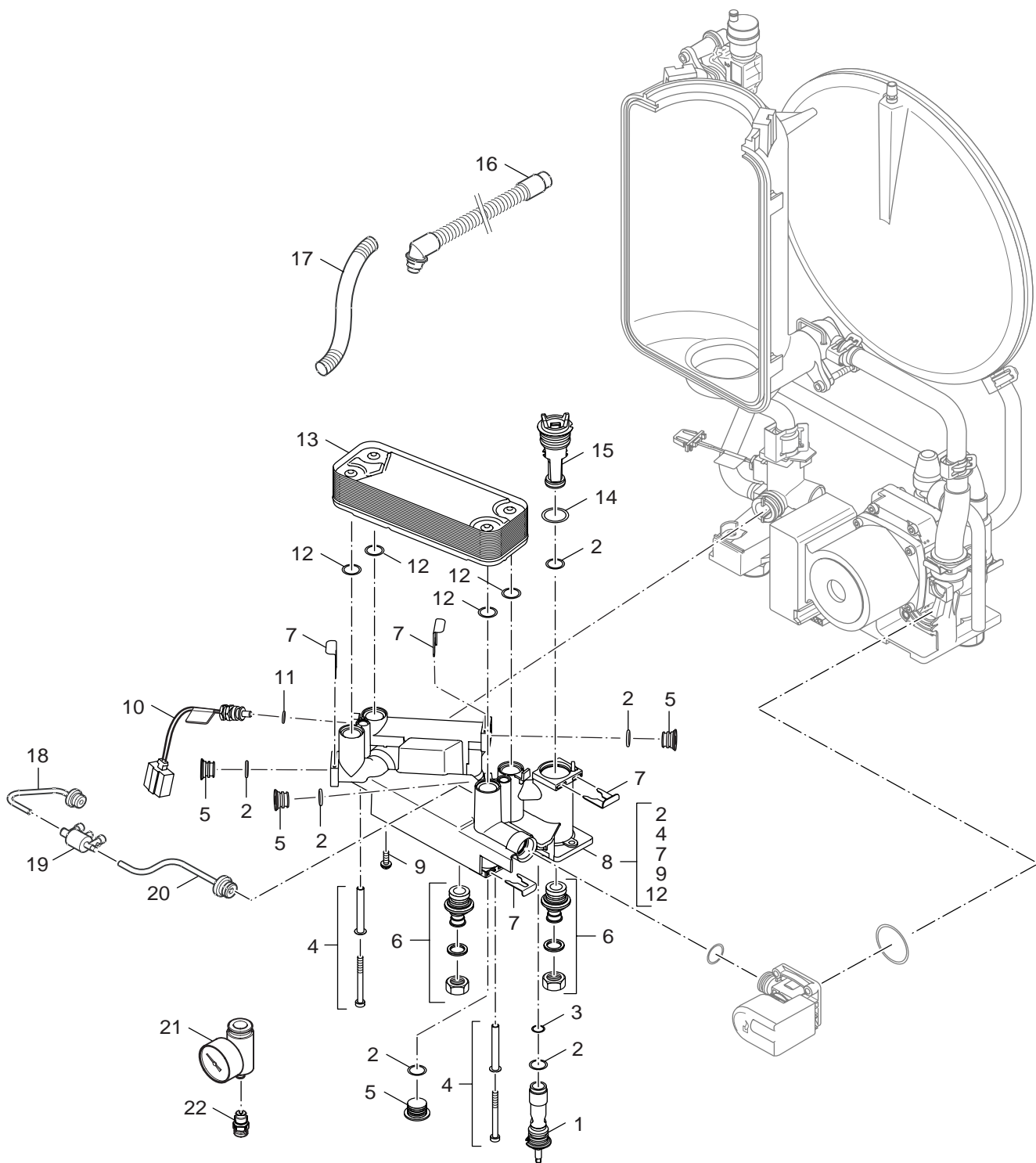


6720904825-01-Vorlauf/Rücklauf Pumpe Single GB022

4
Vorlauf/Rücklauf Pumpe Single GB022
Pump Single GB022
Circulateur Single GB022

GB022

B



6720904827-01-Hydraulik Kombi GB022

5

Hydraulik Kombi GB022
Hydraulic Kombi GB022
hydraulique Kombi GB022

GB022

Übersetzungsliste List of translations		Liste des traductions Traduzione delle descrizioni		Ceviri Listesi Lista das traduções	
Pos	Description	Denomination	Descrizione	Acıklamalar	Descrição
1	Element of construction	Groupe de construction	Gruppo di costruzione	Yapi elemanlari	Elemento da construção
1	Casing	HABIL CPL GB022K	Casing	GB022 DI# PLASTIK KAPAK	revestimento
2	Sealing Cover	Joint	Guarnizione	GB022 DIS SAÇ CONTASI	vedação
3	Casing lock	CLEF HABILLAGE GB022K		GB022 DI# SAÇ KILIT MEKANIZMASI	
4	DBA	DBA 1.9	DBA	GB022 DBA BEYIN	DBA
5	Switch with rocker	Interrupteur	Interruttore a bilico	GB162 ON-OFF #ALTER	Interruptor com báscula
6	Cable harness	Cable harness	Cable harness	GB022 KABLO GRUBU	Cable harness
7	RTH Converter			GB022 ODA TERMOSTAD YUVASI	
8	Grommet cover (2 pc)	Passe-câble (2x)	Passacavo (2x)	Kablo Yuvas# (2x)	passagem do cabo (2x)
9	Holder	SUPPORT U122/124+GB132 SMARTLINE	Supporto	U002-124 DUVAR ASKI SACI	suporte
10	Concentric adapter	ELT RACCORD CHAUD CONCENTRIQUE GB022K			
11	Silicon lip gasket DN100 for Cover plate	Joint de lèvres DN100	Guarnizione ad anello con spigolo di ten	Conta DN100	rebordo da vedação DN100
12	Condensation header Flue pipe with	Siphon de condensat	Collettore condensa	Kondens Suyu Toplay#c#s#	colector de condensados
13	Gasket Flue pipe D60	JOINT POUR EVACUATION D60	Guarnizione D60	GB122 BACA GAZI BORUSU CONTASI	Vedação D60
14	Lip gasket D60 for condensation header	Joint D60	Guarnizione D60	BG122 BACA CONTASI	rebordo da vedação D60
15	Condensation header	Recuperateur de condensats	Collettore condensa	GB122 KONDENSE SU TOPLAYICI	colector de condensados
16	Gasket condensate header flue gas line	Joint pour GB 132	Guarnizione	GB122 KONDENSE SU TOPLY.CONTAS	vedação
17	Sensor Flue gas with Gasket	SONDE POUR CONDENSEUR GB022	Sensor	GB122 BACA GAZI SENSÖRÜ	
18	Gasket kit gas hydraulics	Joints gaz- hydraulique	Guarnizione-Set	U124 SIZDIRMAZLIK CONTA SETI	
19	Gasket set syphon safety valve	Joint siphon	Set guarnizioni	GB122 CONTA	
20	Condensate trap	SIPHON	Sifone	GB 022 SIFON	sifão
2	Element of construction	Groupe de construction	Gruppo di costruzione	Yapi elemanlari	Elemento da construção
1	fan GB132 V3	Ventilateur GB132	Ventilatore	Gebläse kpl GB132 V3	Ventilador caldeira - GB132 V3
2	Gas orifice 2E (G20) m Gasket	Injecteur 2e (g20) avec joint	Ugello 2E (G20) D 4,45	gaz memesi 2E (G20) D 4,45	Injector gás nat. 2E (G20) D 4.45
3	Air nozzle for G20 and G25	Injecteur air g20/g25 24/30 kW	Venturi		
4	Flat gasket kit for air nozzle	Lot de joints plats	Set guarn. piatte per l'ugello dell'aria	Hava memesi için form conta seti	Conj. vedações planas para bocal do ar
5	Fan air supply pipe with Gasket	Tuyau d'aspir d'air de ventil avec joint	Tubo d'aspirazione		
6	Gasket inlet pipe (5x) Nr.111.069A	Joint tuyau d'asp.d'air (5x) nr.111.069a	Guarnizione (5x)		
7	Valve Gas 848 Sigma	BLOC GAZ 848 SIGMA	Gruppo gas 848 Sigma	Gaz Armatürü 848 Sigma	Aut.de Gás premix GB132 - GB022
8	Seal set (5 pcs)	JOINT PLAT 23.8 X 16.4 POUR GB152T (5x)	Guarnizione (5x)	Conta (5x)	vedação (5x)
9	Pipe Gas	Tube gaz	Tubo gas	Gaz Borusu	tubo do gás
10	Flat gasket 1" (5x)	JOINT PLAT 1" (5x)	Guarnizione piatta 1"(5x)	U122-124 1" CONTA (5 LI)	vedação plana 1"(5x)
3	Element of construction	Groupe de construction	Gruppo di costruzione	Yapi elemanlari	Elemento da construção
1	Handle Ionisation electrode / heat	Fixation electrode d'ionisation GB132	Staffa		
2	Ignition Hot Surface	ALLUMEUR A INCANDESCENCE	Ignition Hot Surface	Ignition Hot Surface	Ignition Hot Surface
5	Ionisation electrode for GB112	Electrode ionisation cplt GB112/122/022k	Elettrodo di ionizzazione	GB112 İYONIZASYON ELEKTRODU	Electrodo de ionização p/ GB112
6	Gasket for Ionisation electrode (5x)	Joint electrode ionis,smartline (5x)	Guarnizione Elettrodo di ionizzazione		
7	SERVICE SET GA Supply	KIT DE CONVERSION BRULEUR C2	Set di assistenza per parte inferiore de	GB022 BRÜLÖR	Kit de reparação C2
8	non-return valve BK13 V2 GB022	Kit clapet anti retour GB132	Compon. V2 della valvola unidirezionale	Çekvalf seti V2	Adaptador da válvula de retenção V2
9	Anti-Hammer Valve BK13 V3	Clapet anti-retour bk13 V3	Valvola di ritegno a clapet		
10	sealing fan V2	Joint ventilateur n°111.084	Guarnizione	Conta	vedação
12	Burner gasket	Joint brul smartline	Guarnizione bruciatore		
13	Heat_exchanger Back Side	COQUILLE ARRIERE ECHANGEUR GB132	Isolamento posteriore	#zolasyon arka	isolamento atrás
14	Lip gasket DN36,4x24,4x6,3 (2x)	Joint DN36,4x24,4x6,3 (2x)	Guarnizione ad anello con spigolo di ten	GB122 CONTA 36,4x24,4x6,3	rebordo da vedação DN36,4x24,4x6,3 (2x)
15	O-ring 26,3x5,33 (10x)	O-ring 26,3x5,33 (10x)	O-ring 26,3x5,33 (10x)	GB122 O-RING 26,3x5,33	o-ring 26,3x5,33 (10x)
16	Seal Heat Exchanger	JOINT FACADE AVANT ECHANGEUR GB122	Guarnizione		
17	Heat_exchanger Spiral C2	ECHANGEUR C2 SPIRAL	Scambiatore di calore	E#ANJÖR	Permutador
18	Diverting hood	Deflecteur fumees			
19	Heat_exchanger Front Side	COQUILLE AVANT ECHAN THERMIQUE GB022k	Isolamento anteriore	#zolasyon ön	isolamento à frente
20	Clamp (2x)	Fixation (2x)			
21	Viewing hole window for GB132	Verre de hublot compl.pour GB132			
22	Silicone special, tube 25gr	Graisse silicone tube 25 gr		GB122 YA# TÜPÜ 25GR	
23	MAX THERMOSTAT WITH CLIP	THERMOSTAT SURVEILLANCE+CLIP BRÛLEURS C2	MAX THERMOSTAT WITH CLIP	MAX THERMOSTAT WITH CLIP	MAX THERMOSTAT WITH CLIP
4A	Element of construction	Groupe de construction	Gruppo di costruzione	Yapi elemanlari	Elemento da construção
1	Air vent automatic 10 bar	Purgeur automatique 10bar	Valvola automatica di sfianto 10bar	10bar-115 C OTOMATIK PURJÖR	Purgador
2	Locking device spiral finned tube heat	Fixation échangeur (2x)		GB122 ESANJÖR BA#L.KLIPSI	
3	Connector flow	Piece raccordement depart GB132T	Raccordo	Baglant# Parcas#	peça de ligação

Übersetzungsliste List of translations		Liste des traductions Traduzione delle descrizioni		Ceviri Listesi Lista das traduções	
Pos	Description	Denomination	Descrizione	Aciklamalar	Descrição
4	O-ring 18,72 x2,62 (10x)	JOINT TORIQUE 18.72x2.62 (10x)	O-ring 18,72 x2,62 (10x)	U122-124 (18,72x2,62) CONTA	O-ring 18,72 x2,62 (10x)
5	O-ring 6,86x1,78mm,Set a 10 Piece	JOINT TORIQUE 6.86x1,78 10 PIECES	Anello di tenuta 6,86x1,78mm (10x)	6,86*1,78mm.PLASTIK CONTA	o-ring 6,86x1,78mm (10x)
6	Sensor GB152	SONDE DE SECURITE GB152-022K		Sensör	
7	O-ring 26,3x5,33 (10x)	O-ring 26,3x5,33 (10x)	O-ring 26,3x5,33 (10x)	GB122 O-RING 26,3x5,33	o-ring 26,3x5,33 (10x)
8	Lip gasket DN36,4x24,4x6,3 (2x)	Joint DN36,4x24,4x6,3 (2x)	Guarnizione ad anello con spigolo di ten	GB122 CONTA 36,4x24,4x6,3	rebordo da vedação DN36,4x24,4x6,3 (2x)
9	Clip with Spring (5x)	Clips GB132T/142/smartline (5x)	Clip (5x)		
10	CH SUPPLY PIPE	CH SUPPLY PIPE	CH SUPPLY PIPE	CH SUPPLY PIPE	CH SUPPLY PIPE
11	Support clip 18mm	Fixation GB122 18mm -5 pieces	Clip 18mm	GB122 TUTUCU KLIPS	
12	Connector Return	Tubul racc retour	Raccordo	GB122 DÖNÜ# BA#LT.BORUSU	
13	CH SUPPLY PIPE	CH SUPPLY PIPE	CH SUPPLY PIPE	CH SUPPLY PIPE	CH SUPPLY PIPE
15	o-ring set 21,82x3,53 A 10pc	Kit joint torique 21,82x3,53 a 10pièces	Set O-ring 21,82x3,53 a 10 pz.	O-Ring seti 21,82x3,53 a 10 adet	Conjunto O-rings 21,82x3,53 10 uni.
16	Pump UPER 15-60-130 GB022K	Circulateur UPER 15-60-130 GB022K	Pompa UPER 15-60-130 GB022K	GB 022 SIRK. POMPASI (UPER 15-60-130)	Bomba UPER 15-60-130 GB022K
17	Clip D10/16/16/24 2 St.	JEU CLIP GB022K D10/16/16/24 (2pces)	Clip D10/16/16/24 (2x)		
18	screw M5x30 (5x)	Vis M5x30 (5x)	Vite M5x30 (5x)	Civata M5x30 (5x)	parafuso M5x30 (5x)
20	o-ring set 15,54x2,62 A 10pc	Joint torique Set 15,54x2,62 (10x)	Anello di tenuta Set 15,54x2,62 (10x)	O-Ring Set 15,54x2,62 (10x)	o-ring Set 15,54x2,62 (10x)
21	Grommet o-ring 15,54x2,62	BOUCHON ET JOINT 15,54x2,62	Tappo 15,54x2,62	Tapa 15,54x2,62	tampão 15,54x2,62
23	o-ring set 18x3 A 5pc	JOINT TORIQUE 18x3 (5pces)	Anello di tenuta 18x3 (5x)	O-Ring 18x3 (5x)	o-ring 18x3 (5x)
24	Drive for Three-way valve	Moteur vannes 3 voies GB022K-GB132	Attuatore	Uc yollu vana Motoru	Válvula 3 vias p GB022
25	Retaining bracket 3-way valve motor	Ressort GB132T/142/smartline			
26	Insert for Three-way valve	CORPS VANNE 3 VOIES GB022K		Uc yollu vana Mekanigi	
27	3-way-valve-housing GB152	CARTER VANNES 3 VOIES GB152			
28	o-ring 48,9x2,62	JOINT TORIQUE 48,9x2,62 GB152	Anello di tenuta 48,9x2,62	O-Ring 48,9x2,62	o-ring 48,9x2,62
29	3-way-valve-pump-housing GB152	CARTER DE POMPE DE VANNE 3 VOIES			
30	o-ring 73x5 GB152	Joint torique 73x5	Anello di tenuta 73x5	O-Ring 73x5	o-ring 73x5
31	conn nipple heating flow return GB152	RACCORDEMENT DEPART/RETOUR GB022-GB152		Alt baglant# Rakoru	
32	Flat gasket 3/4" (10x)	JOINT PLAT 3/4" (10x)	Guarnizione piatta 3/4" (10x)	Form Conta 3/4" (10x)	vedação plana 3/4" (10x)
33	O-ring 16x2 (5x)	Joint torique 16x2 (5x)	Anello di tenuta 16x2 (5x).	O-Ring 16x2 (5x).	o-ring 16x2 (5x).
34	Safety valve 3 bar plug and socket	GROUPE DE SECURITE 3 BAR U122/124 GB202	Valvola sicurezza 3bar colleg a spina	U122-124 3 bar EMNIYET VENTILI	Válv seg 3 bar GB112/GB022 c/o-ring
35	Gasket set syphon safety valve	Joint siphon	Set guarnizioni	GB122 CONTA	
36	Discharge pipe				
37	By-pass	BY PASS GB022K	Valvola limitatrice della pressione	GB022 BY-PASS VANASI	válvula de descarga
38	flow-bypass-housing GB152-combi	ELTS DE RACCOR DEPART COMBI GB152-GB022K			
39	O-ring 9,19x2,62 set 10 St	Joint torique 9,19x2,62 kit 10 pièces	O-ring 9,19x2,62 set 10 pz.	GB162 O-RING CONTA(9,19*2,62)	O-ring 9,19x2,62 conjunto 10 unidades
40	flow return sensor GB152	SONDE RETOUR GB152 - GB202	Sonda di ritorno anteriore	Gidis-dönüs hattı sensörü	sonda de retorno
41	TUBE-TWIN-NIPPLE DIN 2982 1/2X60 V	TUYAU-NIPPLE JUMELE DIN 2982 1/2X60 V			
42	screw 4x20 Ejot (5x)	Vis 4x20 Ejot (5x)	Vite 4x20 Ejot (5x)	Civata 4x20 Ejot (5x)	parafuso 4x20 Ejot (5x)
44	Expansion vessel pipe	Tube	Tubo	Boru	tubo
45	O-ring 14,48x2,62 (10x)	JOINT TORIQUE 14.48x2.62 (10x) GB152T	Anello di tenuta 14,48x2,62 (10x)	U122-124 (14.48x2,62)CONTA	
46	Expansion vessel	VASE D'EXPANSION GB022K		GB022 GENLE#ME TANKI	
4B	Element of construction	Groupe de construction	Gruppo di costruzione	Yapi elemanlari	Elemento da construção
1	Air vent automatic 10 bar	Purgeur automatique 10bar	Valvola automatica di sfianto 10bar	10bar-115 C OTOMATIK PURJÖR	Purgador
2	Locking device spiral finned tube heat	Fixation échangeur (2x)		GB122 ESANJÖR BA#L.KLIPSI	
3	Connector flow	Piece raccordement depart GB132T	Raccordo	Baglant# Parcas#	peça de ligação
4	O-ring 18,72 x2,62 (10x)	JOINT TORIQUE 18.72x2.62 (10x)	O-ring 18,72 x2,62 (10x)	U122-124 (18,72x2,62) CONTA	O-ring 18,72 x2,62 (10x)
5	O-ring 6,86x1,78mm,Set a 10 Piece	JOINT TORIQUE 6.86x1,78 10 PIECES	Anello di tenuta 6,86x1,78mm (10x)	6,86*1,78mm.PLASTIK CONTA	o-ring 6,86x1,78mm (10x)
6	Sensor GB152	SONDE DE SECURITE GB152-022K		Sensör	
7	O-ring 26,3x5,33 (10x)	O-ring 26,3x5,33 (10x)	O-ring 26,3x5,33 (10x)	GB122 O-RING 26,3x5,33	o-ring 26,3x5,33 (10x)
8	Lip gasket DN36,4x24,4x6,3 (2x)	Joint DN36,4x24,4x6,3 (2x)	Guarnizione ad anello con spigolo di ten	GB122 CONTA 36,4x24,4x6,3	rebordo da vedação DN36,4x24,4x6,3 (2x)
9	Clip with Spring (5x)	Clips GB132T/142/smartline (5x)	Clip (5x)		
10	CH SUPPLY PIPE	CH SUPPLY PIPE	CH SUPPLY PIPE	CH SUPPLY PIPE	CH SUPPLY PIPE
11	Support clip 18mm	Fixation GB122 18mm -5 pieces	Clip 18mm	GB122 TUTUCU KLIPS	
12	Connector Return	Tubul racc retour	Raccordo	GB122 DÖNÜ# BA#LT.BORUSU	
13	CH SUPPLY PIPE	CH SUPPLY PIPE	CH SUPPLY PIPE	CH SUPPLY PIPE	CH SUPPLY PIPE
15	o-ring set 21,82x3,53 A 10pc	Kit joint torique 21,82x3,53 a 10pièces	Set O-ring 21,82x3,53 a 10 pz.	O-Ring seti 21,82x3,53 a 10 adet	Conjunto O-rings 21,82x3,53 10 uni.
16	Pump UPER 15-60-130 GB022K	Circulateur UPER 15-60-130 GB022K	Pompa UPER 15-60-130 GB022K	GB 022 SIRK. POMPASI (UPER 15-60-130)	Bomba UPER 15-60-130 GB022K
17	Clip D10/16/16/24 2 St.	JEU CLIP GB022K D10/16/16/24 (2pces)	Clip D10/16/16/24 (2x)		
18	screw M5x30 (5x)	Vis M5x30 (5x)	Vite M5x30 (5x)	Civata M5x30 (5x)	parafuso M5x30 (5x)

Übersetzungsliste List of translations		Liste des traductions Traduzione delle descrizioni		Ceviri Listesi Lista das traduções	
Pos	Description	Denomination	Descrizione	Aciklamalar	Descrição
19	Adapter-Backflow for GB152 Single				
20	o-ring set 15,54x2,62 A 10pc	Joint torique Set 15,54x2,62 (10x)	Anello di tenuta Set 15,54x2,62 (10x)	O-Ring Set 15,54x2,62 (10x)	o-ring Set 15,54x2,62 (10x)
21	Grommet o-ring 15,54x2,62	BOUCHON ET JOINT 15,54x2,62	Tappo 15,54x2,62	Tapa 15,54x2,62	tampão 15,54x2,62
22	conn nipple Hot-Water GB152	RACCORD EAU CHAUDE GB022			
23	o-ring set 18x3 A 5pc	JOINT TORIQUE 18x3 (5pcs)	Anello di tenuta 18x3 (5x)	O-Ring 18x3 (5x)	o-ring 18x3 (5x)
24	Drive for Three-way valve	Moteur vannes 3 voies GB022k-GB132	Attuatore	Uc yollu vana Motoru	Válvula 3 vías p GB022
25	Retaining bracket 3-way valve motor	Ressort GB132T/142/smartline			
26	Insert for Three-way valve	CORPS VANNE 3 VOIES GB022K		Uc yollu vana Mekanigi	
27	3-way-valve-housing GB152	CARTER VANNES 3 VOIES GB152			
28	o-ring 48,9x2,62	JOINT TORIQUE 48,9x2,62 GB152	Anello di tenuta 48,9x2,62	O-Ring 48,9x2,62	o-ring 48,9x2,62
29	3-way-valve-pump-housing GB152	CARTER DE POMPE DE VANNE 3 VOIES			
30	o-ring 73x5 GB152	Joint torique 73x5	Anello di tenuta 73x5	O-Ring 73x5	o-ring 73x5
31	conn nipple heating flow return GB152	RACCORDEMENT DEPART/RETOUR GB022-GB152		Alt baglantı# Rakoru	
32	Flat gasket 3/4" (10x)	JOINT PLAT 3/4" (10x)	Guarnizione piatta 3/4" (10x)	Form Conta 3/4" (10x)	vedação plana 3/4" (10x)
33	O-ring 16x2 (5x)	Joint torique 16x2 (5x)	Anello di tenuta 16x2 (5x).	O-Ring 16x2 (5x).	o-ring 16x2 (5x).
34	Safety valve 3 bar plug and socket	GROUPE DE SECURITE 3 BAR U122/124 GB202	Valvola sicurezza 3bar colleg a spina	U122-124 3 bar EMNIYET VENTILI	Válv seg 3 bar GB112/GB022 c/o-ring
35	Gasket set syphon safety valve	Joint siphon	Set guarnizioni	GB122 CONTA	
36	Discharge pipe				
37	By-pass	BY PASS GB022K	Valvola limitatrice della pressione	GB022 BY-PASS VANASI	válvula de descarga
38	flow-bypass-housing GB152-Single				
39	O-ring 9,19x2,62 set 10 St	Joint torique 9,19x2,62 kit 10 pièces	O-ring 9,19x2,62 set 10 pz.	GB162 O-RING CONTA(9,19*2,62)	O-ring 9,19x2,62 conjunto 10 unidades
40	flow return sensor GB152	SONDE RETOUR GB152 - GB202	Sonda di ritorno anteriore	Gidis-dönüs hattı sensörü	sonda de retorno
41	TUBE-TWIN-NIPPLE DIN 2982 1/2X60 V	TUYAU-NIPPLE JUMELE DIN 2982 1/2X60 V			
42	screw 4x20 Ejot (5x)	Vis 4x20 Ejot (5x)	Vite 4x20 Ejot (5x)	Civata 4x20 Ejot (5x)	parafuso 4x20 Ejot (5x)
43	Adapter-Boiler Single GB152	Raccord Boiler	Adattore Boiler	Adaptör Boiler	adaptador Boiler
44	Expansion vessel pipe	Tube	Tubo	Boru	tubo
45	O-ring 14,48x2,62 (10x)	JOINT TORIQUE 14,48x2,62 (10x) GB152T	Anello di tenuta 14,48x2,62 (10x)	U122-124 (14.48x2,62)CONTA	
46	Expansion vessel	VASE D'EXPANSION GB022K		GB022 GENLE#ME TANKI	
5	Element of construction	Groupe de construction	Gruppo di costruzione	Yapı elemanları	Elemento da construção
1	Water Volume Control GB152	REGLEUR DE DEBIT EAU GB152	Regolatore portata	Su Debi Regülatörü	regulador do caudal
2	o-ring set 15,54x2,62 A 10pc	Joint torique Set 15,54x2,62 (10x)	Anello di tenuta Set 15,54x2,62 (10x)	O-Ring Set 15,54x2,62 (10x)	o-ring Set 15,54x2,62 (10x)
3	o-ring 6,07x1,78 A 5pc	Joint torique 6,07x1,78 (5x)	Anello di tenuta 6,07x1,78 (5x)	O-Ring 6,07x1,78 (5x)	o-ring 6,07x1,78 (5x)
4	screw M5x70 distance holders GB152	Vis M5x70	Vite M5x70	Civata M5x70	parafuso M5x70
5	Grommet o-ring 15,54x2,62	BOUCHON ET JOINT 15,54x2,62	Tappo 15,54x2,62	Tapa 15,54x2,62	tampão 15,54x2,62
6	conn nipple Hot-Water GB152	RACCORD EAU CHAUDE GB022			
7	Clip D10/16/16/24 2 St.	JEU CLIP GB022K D10/16/16/24 (2pcs)	Clip D10/16/16/24 (2x)		
8	Hydraulic Connection Plate Heat Exchange			Esanjor Hidrolik Grubu	
9	screw 4x20 Ejot (5x)	Vis 4x20 Ejot (5x)	Vite 4x20 Ejot (5x)	Civata 4x20 Ejot (5x)	parafuso 4x20 Ejot (5x)
10	Sensor NTC cpl (611 248A)	SONDE NTC COMPLETE (611248A) GB202	Sonda NTC compl. (611 248A)	GB162 NTC EMNIYET SENSÖRÜ	Sonda NTC comp. (611 248A)
11	O-ring 9,19x2,62 set 10 St	Joint torique 9,19x2,62 kit 10 pièces	O-ring 9,19x2,62 set 10 pz.	GB162 O-RING CONTA(9,19*2,62)	O-ring 9,19x2,62 conjunto 10 unidades
12	o-ring 16x3,5 A 10pc	Joint torique 16x3,5 (10x)	Anello di tenuta 16x3,5 (10x)	O-Ring 16x3,5 (10x)	o-ring 16x3,5 (10x)
13	flat heat exchanger GB152	ECHANGEUR A PLAQUE GB152-022K		GB022 plaka esanjör	
14	o-ring 24,2x3 A 5pc	Joint torique 24,2x3 (5x)	Anello di tenuta 24,2x3 (5x)	O-Ring 24,2x3 (5x)	o-ring 24,2x3 (5x)
15	Flow Sensor wth Filter	DEBITMETRE GB022K-GB152		GB022 Türbin	
16	Drainpipe + extension syphon	TUBE DE SYPHON POUR GB022K		GB022 SIFON FLEKSI	
17	Condensate drainpipe 24	Condensate drainpipe 24	Condensate drainpipe 24	GB022 FLEX HORTUM	Tubo esgoto condensados
18	DISCONNECTEUR RETURN PIPE	TUYAU RETOUR DISCONNECTEUR	DISCONNECTEUR RETURN PIPE	GB022 DOLDURMA MUSLU#U GIDI# BORUSU	DISCONNECTEUR RETURN PIPE
19	DISCONNECTEUR GB022K	DISCONNECTEUR GB122	DISCONNECTEUR GB022K	GB022 SU DOLDURMA VANASI	DISCONNECTEUR GB022K
20	DISCONNECTEUR SUPPLY PIPE	TUYAU DEPART DISCONNECTEUR	DISCONNECTEUR SUPPLY PIPE	GB022 DOLD. MUSLU#U DÖNÜ# BORUSU	DISCONNECTEUR SUPPLY PIPE
21	GB022 MONOMETRE BAGLANTI SETI	GB022 MONOMETRE BAGLANTI SETI	GB022 MONOMETRE BAGLANTI SETI	GB022 MONOMETRE BA#LANTI SETI	GB022 MONOMETRE BAGLANTI SETI
22	Draincock	SOUPEPE DE DEGAZAGE	Valvola automatica di sfio	Hava Alma Ventili	válvula de purga

Bosch Thermotechnik GmbH
Sophienstraße 30-32
D-35576 Wetzlar
www.buderus.de

Buderus